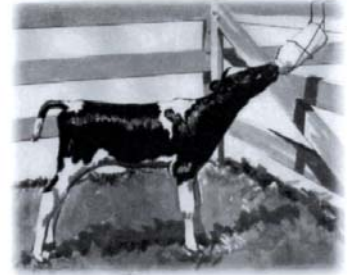
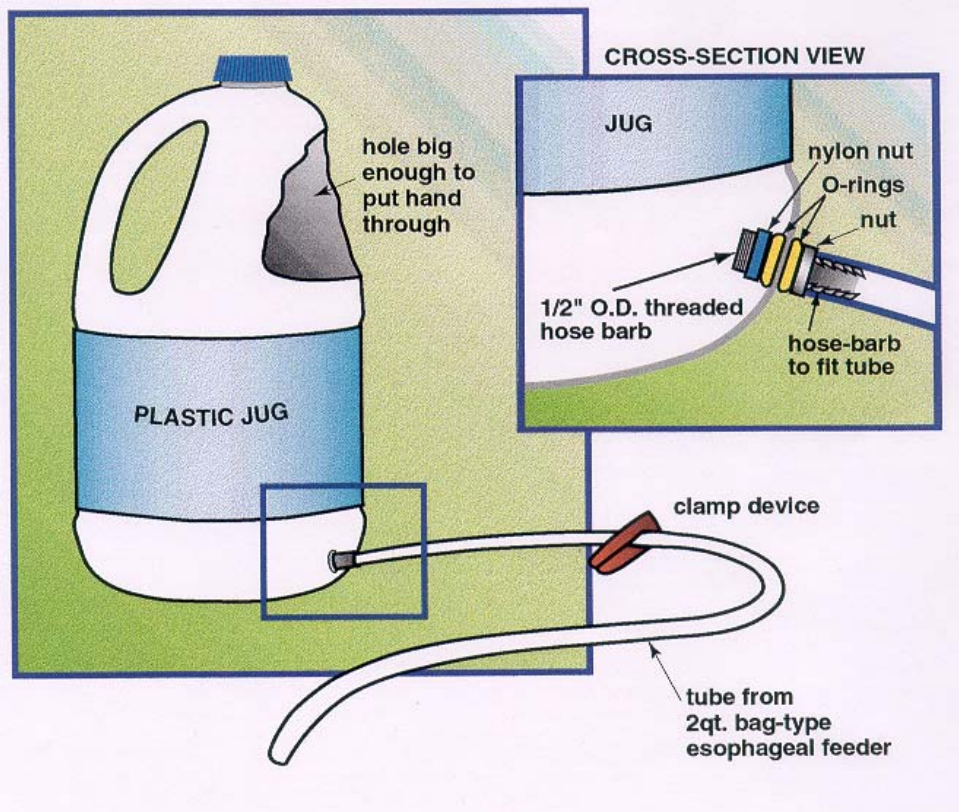


# FrontLine®

TECHNICAL INFORMATION FOR TODAY'S FEED PROFESSIONAL



## One-gallon ESOPHAGEAL CALF FEEDER



Use a jug from soap or sanitizer (heavier than average), not pesticide. Replace hose or jug as needed. Can use without clamp device if jug kept below tube tip until inserted in calf's esophagus. Can avoid cutout in jug if wide-mouth jug is available.

 **Milk Products** Inc.  
The Milk Replacer Source™